

INNOVATION LEADS TO VALUE



SUNWARD

SWE400F-5

LARGE-EXCAVATOR

◆ Total weight: 39.2t
86421 lb

◆ Engine power: 252kW/1800rpm
343HP

◆ Bucket capacity: 2.0m³
2.6yd³



◆ Emission Upgrade, Robust Power

The 254KW large power reserve engine boasts a strong power output; the 249KN bucket digging force easily handles heavy-duty conditions.

◆ New Style, Mighty and Commanding

The new generation F series features a brand new appearance, with a robust and commanding presence. The design incorporates more mining elements, combining elegance with power.

Efficiency First, Efficient and Energy-Saving

The large exhaust main pump and large passage diameter main valve are equipped with an independent cooling system. The 2.8m arm is paired with a 2.0m³ large bucket capacity hyperbolic rock bucket, and the crushing system is matched with a 175 hammer for efficient and energy-saving performance.

◆ Reliable and Durable, Diamond Quality

The heavy-duty working device with a large box section, supported by 45t-level forged components. The 40-50t-level extended and widened lower assembly, with a four-wheel and belt system, offers reliable and doubled load-bearing capacity.

Comfortable Operation, Easy Maintenance The new generation cab features a 10.1-inch large touch LCD screen, one-touch start, and centralized full-key switches; the direct current air filter makes maintenance and upkeep more convenient.

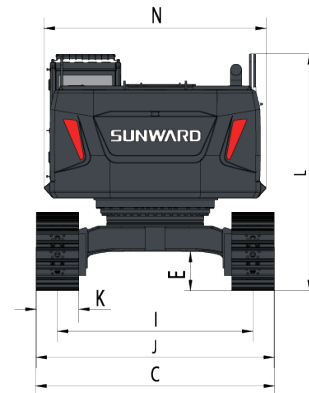
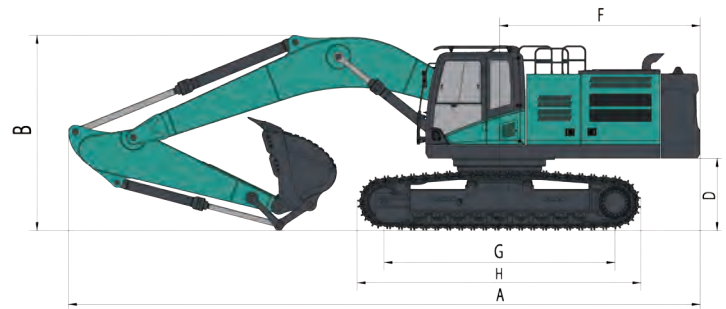
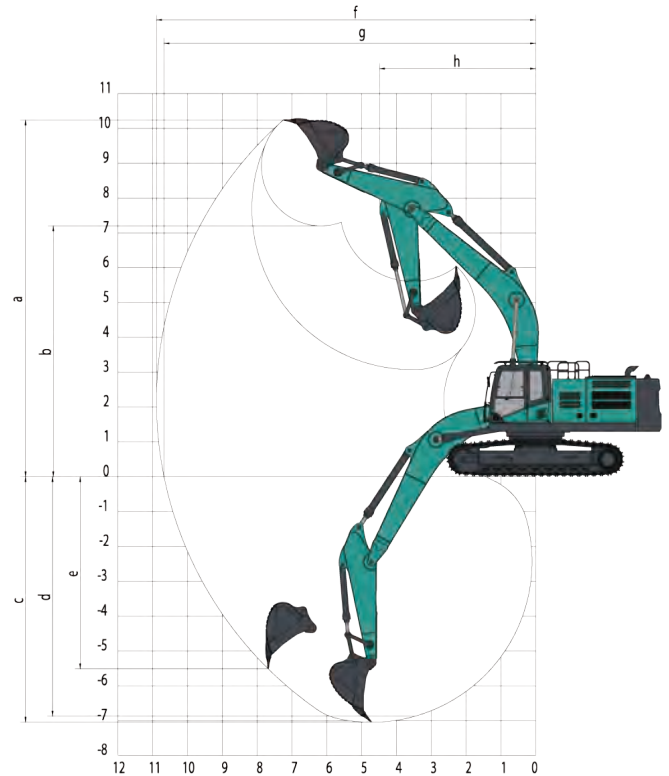
TECHNICAL PARAMETERS



SWE400F-5

Performance parameters

working weight	kg	lb	39200	86421
Standard bucket capacity	m ³	yd ³	2.0	2.6
Performance				
Bucket Digging Force	kN	lbf	249	55977
Boom Digging Force	kN	lbf	207	46535
Max. Traction	kN	lbf	348	78233
Max climbing angle	%		70	70
Ground Pressure	kPa	psi	69.6	10.1
Travel Speed(Max/Min)	km/h	mph	5.4/3.1	3.3/1.9
Swing speed	rpm		9	9
Oil tank capacity				
Fuel Tank	L	Gal	700	184.9
Hydraulic Oil Tank	L	Gal	475	125.5
Engine				
Brand	Cummins			
Model	L9S5-C338			
Power	kw/rpm	hp/rpm	252/1800	343/1800
Max torque	N.m/rpm	lbf.ft/rpm	1526/1400	1125/1400
Displacement	L	in ³	8.9	543.1
Hydraulic system				
Main pump	Brand	Hengli		
	Model	V90N180		
	Type	Variable plunger pump		
	Max flow	L/min	Gal/min	2×324 2×85.6
	Working Pressure	MPa	psi	34.3 4975
Pilot pump	Type	Gear pump		
	Max flow	L/min	Gal/min	27 7.1
	Working Pressure	MPa	psi	3.9 565.6
AUX-1 pipe flow(breaker)	L/min	Gal/min	324	85.6
AUX-2 pipe flow	L/min	Gal/min	35	9.2
Main valve	Brand	Hengli		
	Model	HVME700B		
Swing motor	Brand	Hengli		
	Model	HM5X180CHB		
Travel motor	Brand	Nabtesco		
	Model	GM70VA		



	Boom length	mm	ft	6500	21.3
	Arm length	mm	ft	2800	9.2
a	Max. Cutting Height	mm	ft	10375	34.0
b	Max. Loading Height	mm	ft	7175	23.5
c	Max. Digging Depth	mm	ft	7020	23.0
d	Digging Depth(2.44 meter)	mm	ft	6855	22.5
e	Max. Vertical Wall Digging Depth	mm	ft	5500	18.0
f	Max. Digging Reach	mm	ft	10925	35.8
g	Max. Reach at Ground Level	mm	ft	10705	35.1
h	Min swing radius in the front	mm	ft	4510	14.8

Outline dimension

A	Total length	mm	ft	11400	37.4	H	Track Length	mm	ft	5115	16.8
B	Total height	mm	ft	3630	11.9	I	Shoe distance	mm	ft	2740	9.0
C	Total width	mm	ft	3350	11.0	J	Track width	mm	ft	3340	11.0
D	Counterweight Clearance	mm	ft	1300	4.3	K	Shoe Width	mm	ft	600	2.0
E	Chasis ground clearance	mm	ft	550	1.8	L	Max height of total machine	mm	ft	3330	10.9
F	Tail swing radius	mm	ft	3615	11.9	N	Swing width	mm	ft	3120	10.2
G	Track length on the ground	mm	ft	4160	13.6						

The above parameters may be different due to product upgrading.

SUNWARD AMERICA CORP

Add: 2710 Geesling Road, Denton, TX 76201 Phone: (469)-353-6890
E-mail: Contact@sunwardamerica.com Web: www.sunwardamerica.com

SUNWARD CANADA EQUIPMENT INC.

Add: 2055 Pegasus Rd NE, Calgary, AB T2E 8C3 Phone: (403)-370-9870
E-mail: Canada@sunward.ca Web: www.sunwardca.com

