

CONSTRUCTION EQUIPMENT

**SUNWARD**  
AMERICA™

TELEHANDLER

**SWTH634 | SWTH1056**





# Main Features

SWTH series telescopic handlers are mechanical, electric and hydraulic integrated multi-functional handling and lifting logistic equipment of a new generation independently developed by Sunward, and their performance parameters have reached the international advanced level. They are an ideal and efficient loading, unloading, and handling tool for the modern industry, construction industry, and agriculture. The equipment has been widely used at factories, warehouses, terminals, construction sites, farms for cultivation, material yards, etc.



## A Powerful Dynamic System

It is powerful, efficient in driving, and stable in performance with hydrostatic drive, 4X4 drive, and a top configuration consisting of an imported engine, axle, gearbox, hydraulic elements, etc.

## A Suspension System of Good Performance

It has a very good buffering and vibration damping effect when leveling with the front axle and floating with the rear axle, and the rigid locking function of the rear axle and the frame leveling function of the front axle can greatly improve the off-road performance and the driving comfort.

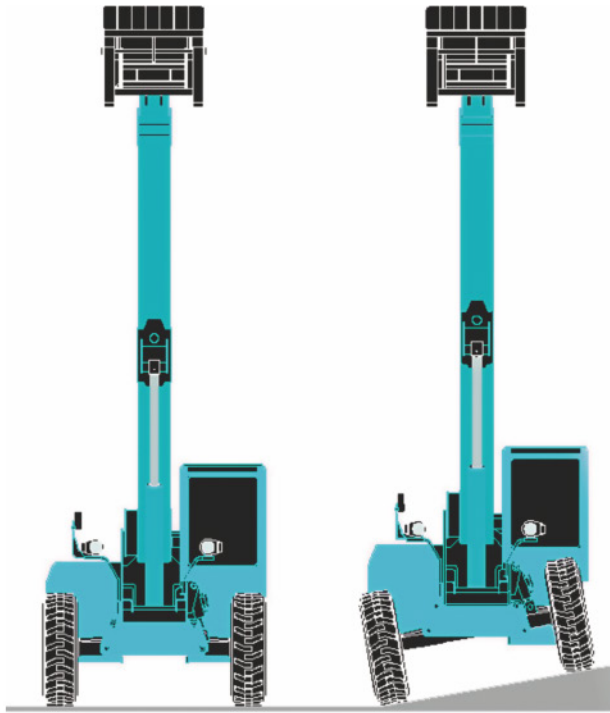
## A Light and Flexible Steering System

Three steering modes (front-wheel steering, four-wheel steering, and crab steering) that can be randomly switched are provided to satisfy the requirements of various working conditions; moreover, the power-assisted steering function of the light and flexible hydraulic cylinder also greatly improves the maneuverability and the flexibility.

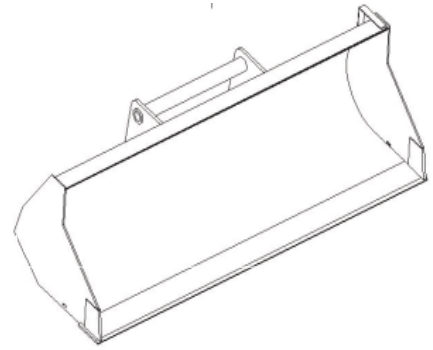
## A Precise and Convenient Control System

The intelligent electrically controlled accelerator is easy to operate. The electro-hydraulic proportional control system with pressure compensation and load feedback prevents the working speed from being affected by load variations and keeps the system at a small power loss and good stability. The electric proportional control lever of excellent performance also entails good jogging control and stability of different movements, thus, greatly reducing the operation difficulty level for operators.

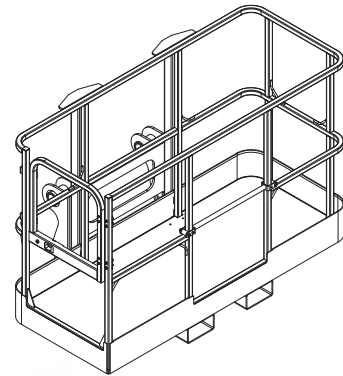
## Frame Leveling Function



## Optional Attachments



Bucket	
Overall dimensions: (LxWxH, in)	90.6×38.4×31.7
Weight: (lb)	820
Bucket capacity (yd³)	1.3
Applicable model:	Products of SWTH series



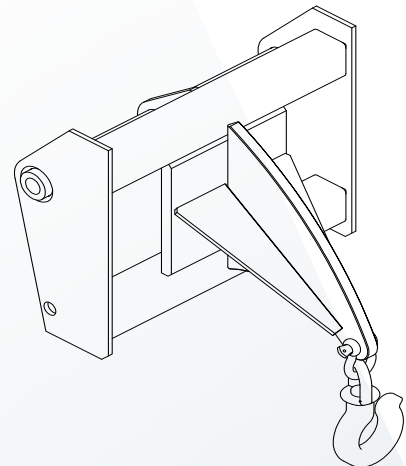
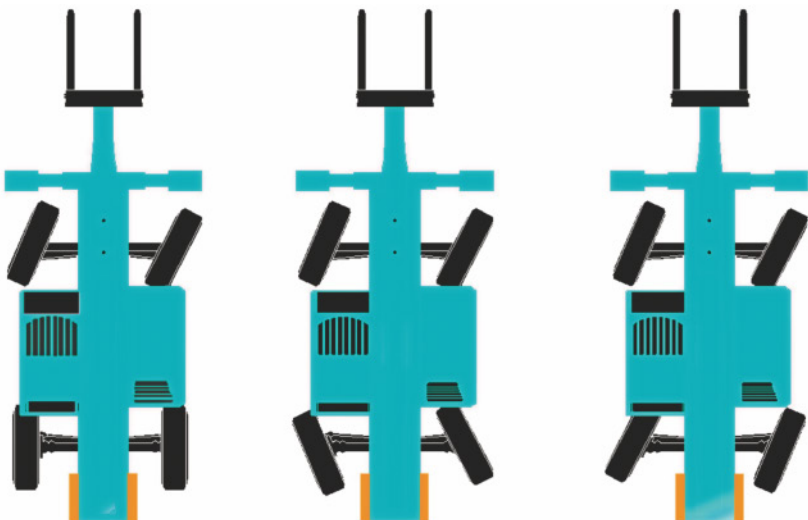
Personnel work platform	
Overall dimensions: (LxWxH, in)	72×41.1×49
Weight: (lb)	408
Rated loading: (lb)	805
Applicable model:	Products of SWTH series

## Three Steering Modes

Front-wheel Steering

Four-wheel Steering

Crab Steering



Lifting hook	
Overall dimensions: (LxWxH, in)	28.1×30.7×25.2
Weight: (lb)	364
Rated loading: (lb)	7716
Applicable model:	Products of SWTH series

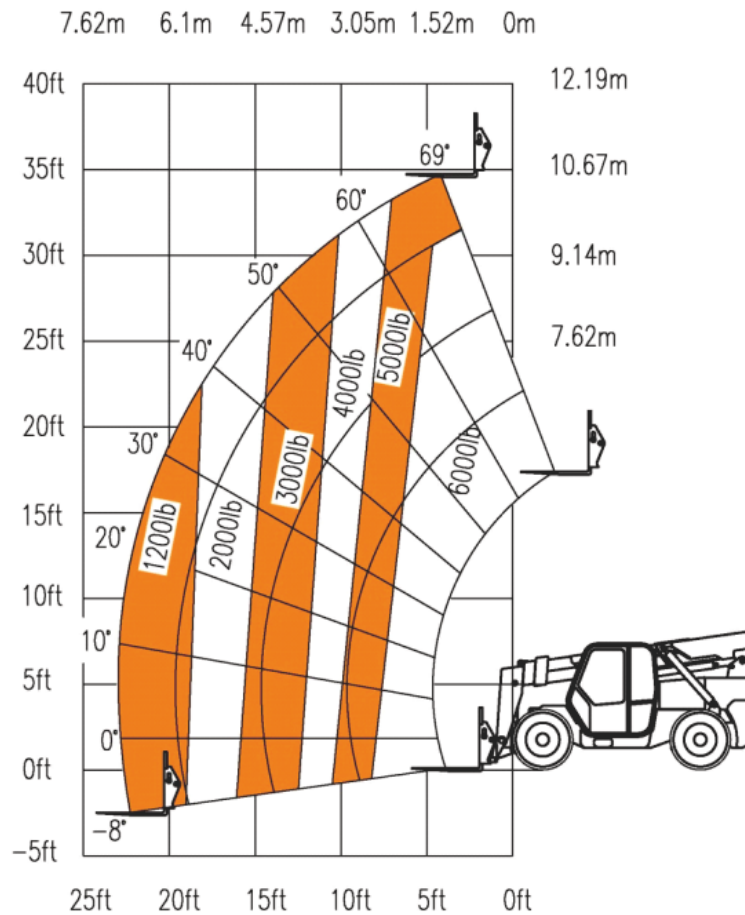
# SWTH634

Performance Parameters		
BASIC PARAMETERS	Overall dimensions(L*W*H)	240.2 in*91.3 in*94.5 in
	Overall weight (no-load)	17,860 lb
	Rated bearing capacity	6,000 lb
	Max. lifting height	34 ft
	Max. extension length	23 ft
	Loading capacity at Max. extension length	1,200 lb
	tGround clearance	14 in
	Turing radius (outside)	12.5 ft
	Traction Force	14,390 lb
ACTUATION TIME	No-load lifting time	15 s
	No-load descending time	10 s
	No-load full retraction time	15 s
	No-load full extension time	13 s
POWER TRAIN	Drive mode	hydrodynamic driven
	Shift (Fwd./Rwd.)	3/3
	Max. Traveling speed	18 mph
	Gradeability	60%
ENGINE	Brand	Deutz
	Model	TCD3.6L4HT
	Power	74 hp
	Max. Torque	287 lb-ft
	Oil injection method	Electronic injection
	Cooling method	Water cooling
CAPACITY	Hydraulic oil	37 gal
	Fuel	37 gal
	Engine oil	2.7 gal
	Engine coolant	2.7 gal
TIRE	Rough terrain Patterned pneumatic tires	16/70-20

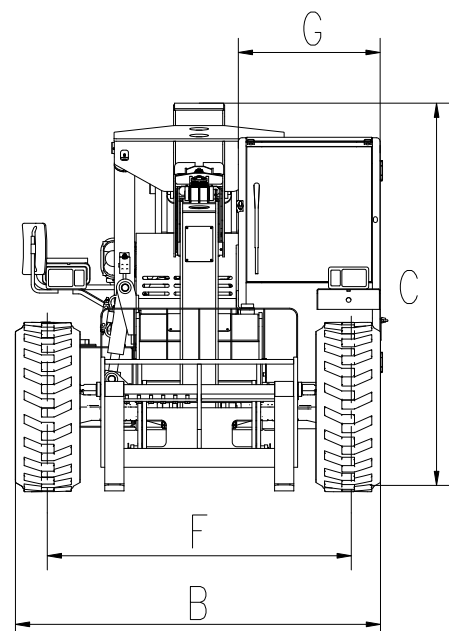
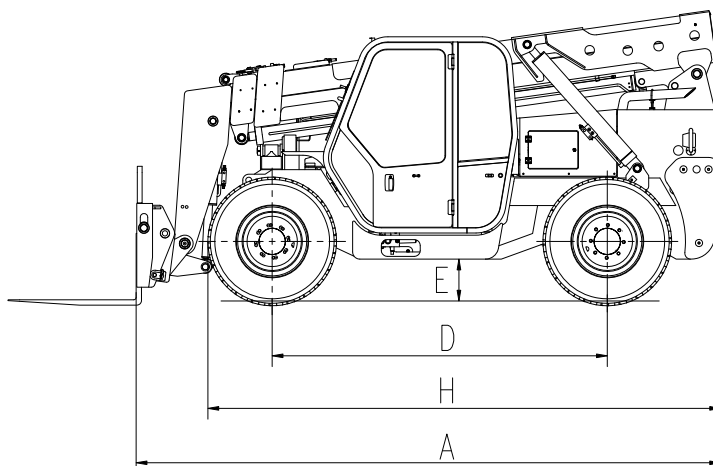
Standard Configuration	
Hydraulic pilot	Hydraulic transmission
Four-wheel drive	Three steering modes
Three boom	Work light
The horn	Warning light
Driving light	Floating fork
Quick change device	Automatic leveling system for fork
Frame leveling system	Tubing explosion-proof system
Anti-tipping protection system	Reversing imag
Off-road pattern pneumatic tires	Open cab

Optional Configuration	
Solid tyre	Personnel work platform
Pipe grapple	Bucket
Soft clamp	Coupler mounted hook
Enclosed cab	Cold/hot air conditioning

# SWTH634



Dimensions		
A	Length (to Pallet fork)	193 in
B	Width	91.3 in
C	Height	94.5 in
D	Wheel base	110 in
E	Ground Clearance	14 in
F	Wheel tread	76 in
G	The Cab width	35.4 in
H	Length (to front wheel)	168.7 in



# SWTH1056

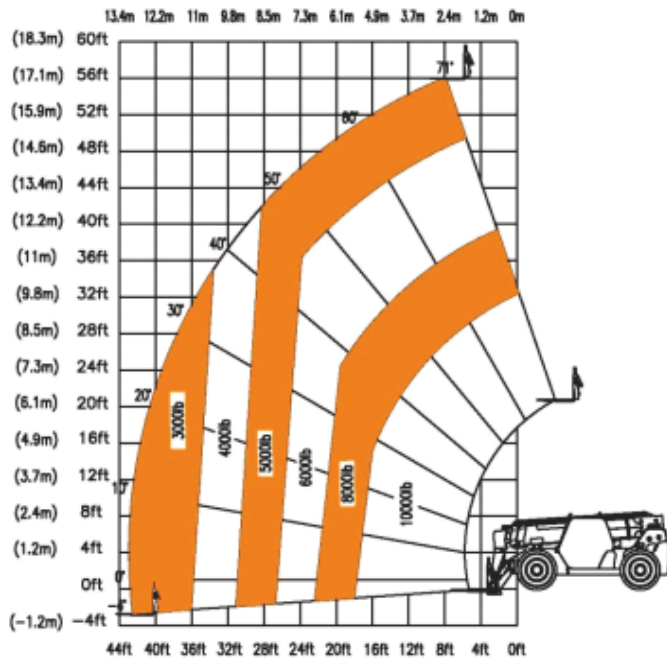
Performance Parameters		
BASIC PARAMETERS	Overall dimensions(L*W*H)	289 in*100.8 in*100 in
	Overall weight (no-load)	33,290 lb
	Rated bearing capacity	10,000 lb
	Max. lifting height	56 ft
	Max. extension length	42 ft
	Loading capacity at Max. extension length	3,000 lb
	Ground clearance	18 in
	Turing radius (outside)	14 ft
	Traction Force	25,000 lb
	No-load lifting time	14 s
ACTUATION TIME	No-load descending time	13 s
	No-load full retraction time	17 s
	No-load full extension time	16 s
	No-load full retraction time	17 s
POWER TRAIN	Drive mode	hydrodynamic driven
	Shift (Fwd./Rwd.)	4/3
	Max. Traveling speed	20 mph
	Gradeability	60%
ENGINE	Brand	Cummins
	Model	QSF3.8L Tier 4F
	Power	130 hp
	Emission Standard	US EPA4
	Max. Torque	360 lb-ft
	Oil injection method	Electronic injection
	Cooling method	Water cooling
CAPACITY	Hydraulic oil	45 gal
	Fuel oil	41 gal
	Engine oil	3.2 gal
	Engine coolant	3.2 gal
TIRE	Rough terrain Patterned pneumatic tires	400/75-28

Standard Configuration	
Electrically controlled handle	Hydrodynamic driven
Four-wheel Drive	Three steering modes
Rear View Camera	Fan
Warning light	LED Work light
Frame leveling	Quick-change device
Overload protection	Rough terrain Patterned pneumatic tires
Open cab	Mud-guard
The horn	Driving light
Floating fork	Automatic leveling system for fork
Four boom	Tubing explosion-proof system

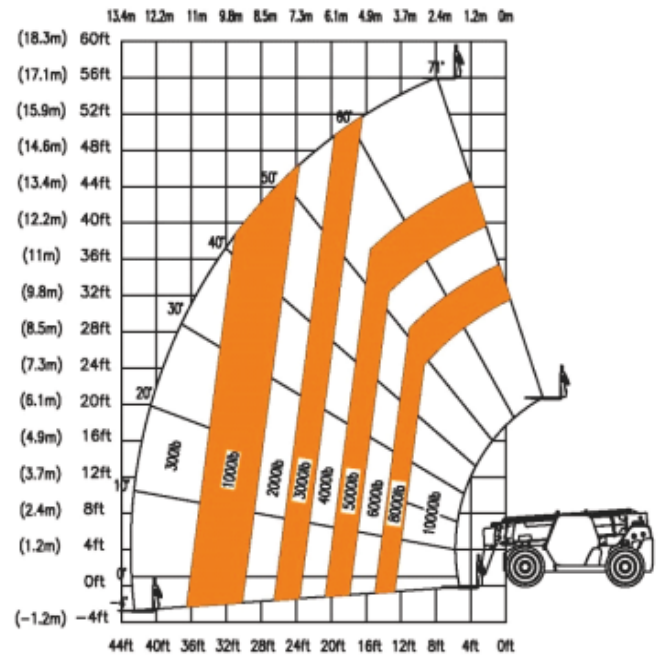
Optional Configuration	
Solid tyre	Personnel work platform
Pipe grapple	Bucket
Soft clamp	Coupler mounted hook
Enclosed cab	Cold/hot air conditioning



# SWTH1056

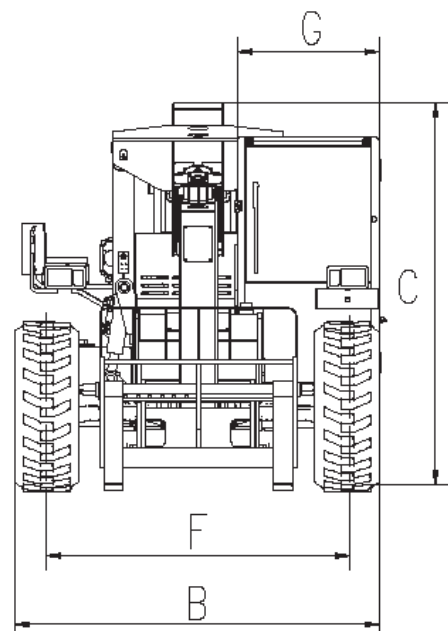
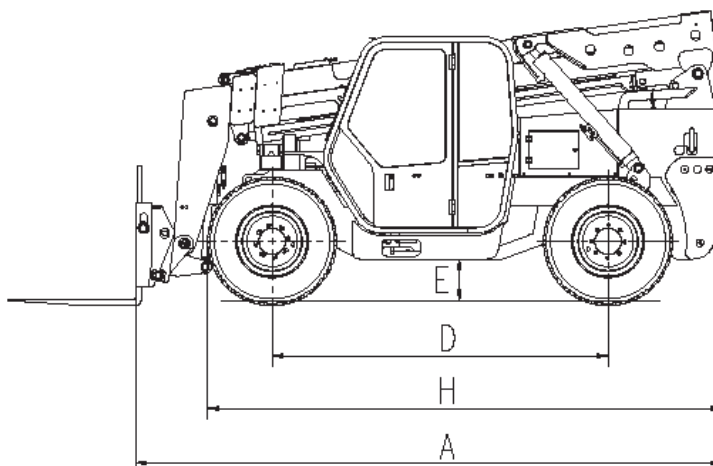


OUTRIGGERS DOWN



OUTRIGGERS UP

Dimensions		
A	Length (to Pallet fork)	240.8 in
B	Width	100.75 in
C	Height	100 in
D	Wheel base	137.5 in
E	Ground Clearance	18 in
F	Wheel tread	85.1 in
G	The Cab width	37 in
H	Length (to front wheel)	201.6 in



## Sunward America and Sunward Canada

Please check our website for our current list of dealers.



### SUNWARD AMERICA CORP

✉ 2710 Geesling Road,  
Denton, TX 76208

☎ (469) 353-6890

✉ Contact@sunwardamerica.com

🌐 [www.sunwardamerica.com](http://www.sunwardamerica.com)

### DEALER CONTACTS