

MEDIUM EXCAVATOR

SWE155F

Engine Power: 124.62 HP/ 93 kW

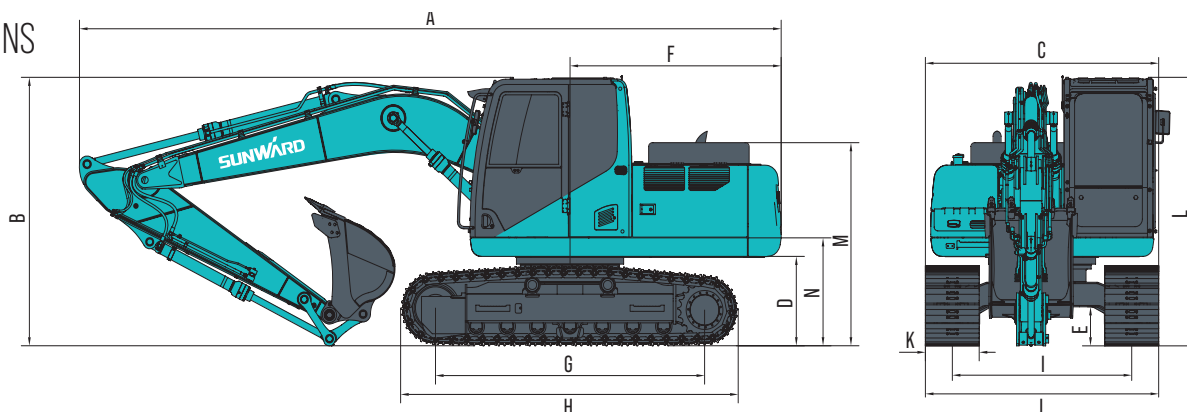
Machine Weight: 3,4392 lb/ 15600 kg



TECHNICAL PARAMETERS

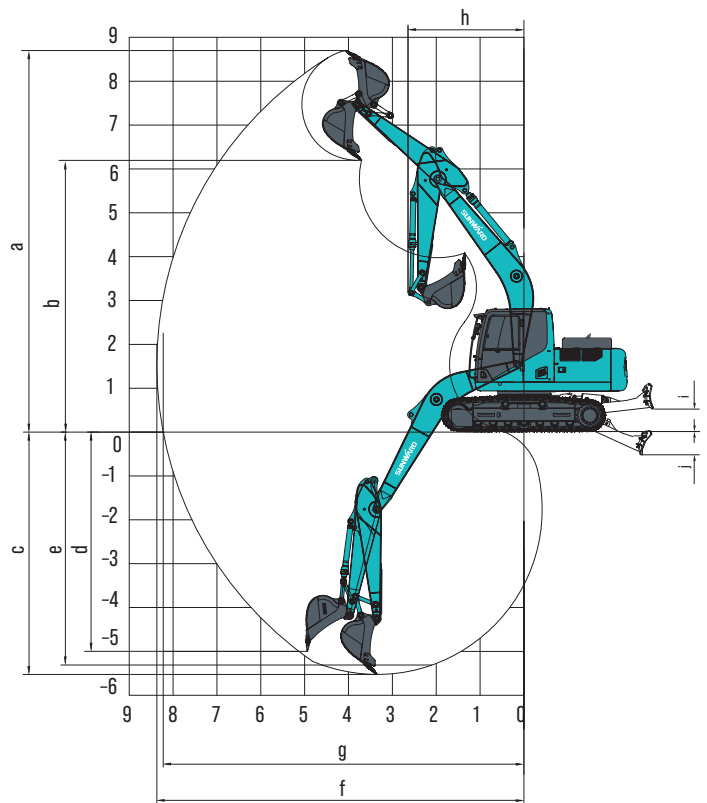
		Imperial	Metric
TYPE OF CAB		Cab	Cab
BUCKET CAPACITY		0.8 yd ³	0.61 m ³
BUCKET WIDTH, STD.		3'1"	940 mm
MACHINE WEIGHT		34392 lb	15 600 kg
DIMENSIONS	Boom Length	15'1"	4 600 mm
	Arm Length	8'2"	2 500 mm
	Overall dimension (L × W × H)	27'1" x 8'6" x 9'8"	8 250 * 2 600 * 2 950 mm
	A Total Length	27'1"	8 250 mm
	B Total Height	9'4"	2 850 mm
	C Total Width	8'6"	2 600 mm
	D Counterweight ground clearance	3'1"	940 mm
	E Mini ground clearance	1'4"	410 mm
	F Tail swing radius	7'9"	2355 mm
	G Track length on the ground	9'10"	3 000 mm
	H Track Length	12'4"	3 765 mm
	I Track gauge	6'7"	2 000 mm
	J Undercarriage Width	8'6"	2 600 mm
	K Trackshoe width	2'	600 mm
	L Cab height	9'4"	2 850 mm
	M Height of engine hood	7'	2 145 mm
N Width of turntable	8'2"	2 490 mm	
SPECIFICATION	Operating weight	34392 lb	15 600 kg
	Bucket capacity	0.8yd ³	0.61 m ³
ENGINE	Brand	Cummins	Cummins
	Emmission Rating	Tier 4 Final	Tier 4 Final
	Model	QSF3. 8	QSF3. 8
	Type	4 Stroke, Turbo Charged, Air cooled, Direct In	4 Stroke, Turbo Charged, Air cooled, Direct In
	Power	124.62 HP/2 200 rpm	93 kW/2 200 rpm
	Max Output Torque	369 lbf.ft/1 500 rpm	500 Nm/1 500 rpm
	Displacement	1 gal	3.8 L
HYDRAULIC SYSTEM	Hydraulic pump type	Variable Piston Pump	Variable Piston Pump
	Max displacement of hydraulic pump	2×27.8 gal/min	2×126.4 L/min
	Hydraulic pressure of hydraulic pump	34.3 Mpa	34.3 Mpa
	Pilot pump	Gear Pump	Gear Pump
	Max displacement of pilot pump	4.4 gal/min	20 L/min
	Hydraulic pressure of pilot pump	3.9 Mpa	3.9 Mpa
PERFORMANCE	Swing speed	11 rpm	11 rpm
	Travel Speed	3.3-2 mi/h	5.3-3.2 km/h
	Gradeability	35 °	35 °
	Ground Pressure	5.34 psi	36.8 kPa
TANK CAPACITY	Fuel Tank Capacity	53.9 gal	245 L
TRACK		2' steel track	2' steel track
		2'4" steel track	2'4" steel track
		2'7" steel track	2'7" steel track

DIMENSIONS



WORKING RANGE

		Imperial	Metric
WORKING RANGE & BREAKOUT FORCE	a	Max. cutting height	28'4" 8 640 mm
	b	Max. loading height	20'2" 6 145 mm
	c	Max. digging depth	18'2" 5 525 mm
	d	Max. digging depth (2.4 m)	17'5" 5 320 mm
	e	Max. vertical digging depth	16'2" 4 930 mm
	f	Max. digging reach	27'4" 8 330 mm
	g	Max. reach on ground	26'9" 8 150 mm
	h	Min. front swing radius	8'4" 2 530 mm
	i	Max dozer lifting height	1'9" 532 mm
	j	Max dozer cutting depth	2'1" 628 mm
		Max digging force (Bucket)	22480 lbf 100 kN
		Max digging force (Arm)	17085 lbf 76 kN



Sunward America and Sunward Canada

Please check our website for our current list of dealers.



SUNWARD AMERICA CORP

✉ 2710 Geesling Road
Denton, TX 76208

☎ (469) 353-6890

▶ Contact@sunwardamerica.com

🌐 www.sunwardamerica.com

DEALER CONTACTS